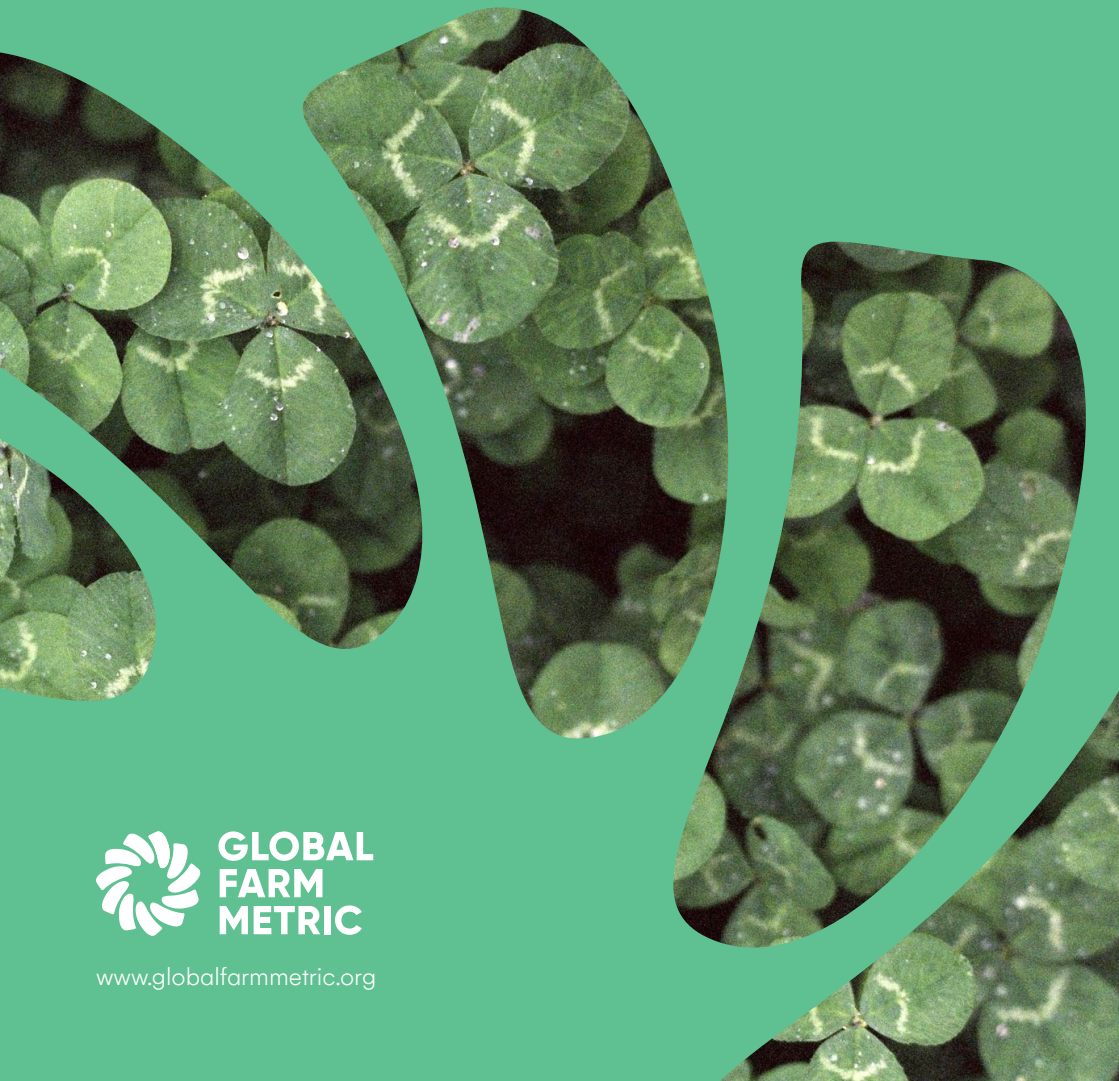


Global Farm Metric

2023

A common framework
for sustainability in
food and farming



**GLOBAL
FARM
METRIC**

www.globalfarmmetric.org

The Challenge

Almost half of the world's habitable land is now farmed to feed our global food production system. What happens on this land will determine our biodiversity, climate and health.

There are barriers that prevent farmers becoming drivers of positive change.

Lack of a common language.

There is no consistent definition of on-farm sustainability, limiting understanding of the issues and where to start.

Existing definitions overlook the interconnectedness of the farming system.

Unless sustainability is understood holistically, taking into account environmental, social and economic outcomes, the pursuit of a single target can have unintended consequences on the rest of the system.

Sustainability frameworks are not developed for farmers.

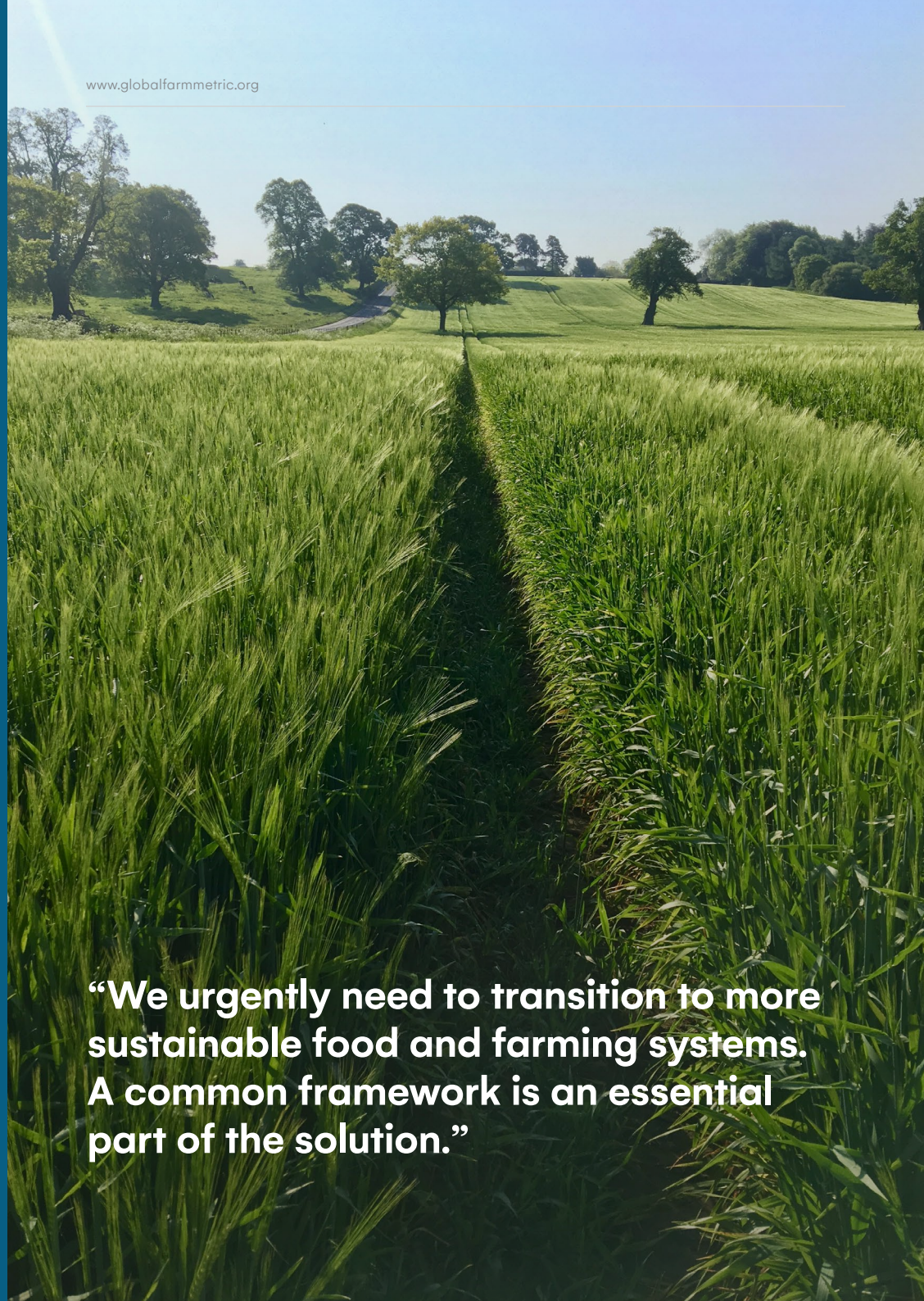
Often they are tools used by governments, companies and supply chains for data collection and impact reporting. This limits their ability to provide useful insights for farmers.

Focus on farm practices.

Agriculture is context specific, so practices that deliver positive outcomes in one location may not do so in another.

No consistent way of measuring and monitoring sustainability at farm-level.

Farmers are asked to collect data in different ways, increasing the time-burden and complexity of assessment.



“We urgently need to transition to more sustainable food and farming systems. A common framework is an essential part of the solution.”

The Mission

Our mission is to support the transition to more sustainable food and farming systems from the ground up.

The Global Farm Metric does this by offering a holistic framework that provides a common language for farm sustainability.

First and foremost, it supports farmers to understand, measure and monitor the environmental, social and economic **state of their farm**, the **practices** they use, the **outputs** from the farm, and the **impacts** these have on the world beyond the farm.

A common framework enables farmers, food businesses, certifiers, banks and governments to speak the same language. This generates a shared understanding of what must be monitored to build resilient and sustainable farm systems.

Through this, the Global Farm Metric can create a policy and economic environment that supports continuous improvement in farm sustainability and drives collective action for nature, climate and people.



The Framework

The Global Farm Metric framework is an open-access resource for all food and farming stakeholders to understand, measure and monitor farm-level sustainability.

The framework encompasses four components, which together form a holistic picture of farm sustainability. These are the **farm system** itself, the **practices** used, the **outputs** it produces, and the **impacts** these have on the world beyond the farm.

Many farm sustainability assessments focus on the outputs and impacts of the farm, or on the practices implemented. The GFM is unique in acknowledging the importance of monitoring the state of the farm itself. This is essential to understand the strengths and weaknesses of the farm and the risks to its immediate and long-term sustainability.

The inner wheel of the framework has three levels — categories, sub-categories and indicators*. The 12 categories (coloured wedges) define the farm system. Within each category are sub-categories which, together, encompass all aspects of farm sustainability. In each subcategory, indicators demonstrate how farm sustainability can be evaluated in assessments. These can be adjusted to reflect the diversity of farming systems and contexts.



Farm system: the interconnected elements of a farm, including environmental, social and economic.

Farm practices: the actions taken on a farm.

Farm outputs: the products, waste, services and disservices created by the farm.

Impacts: the effect of the farm, its practices and outputs, on the world beyond the farm.

Applications of the Framework

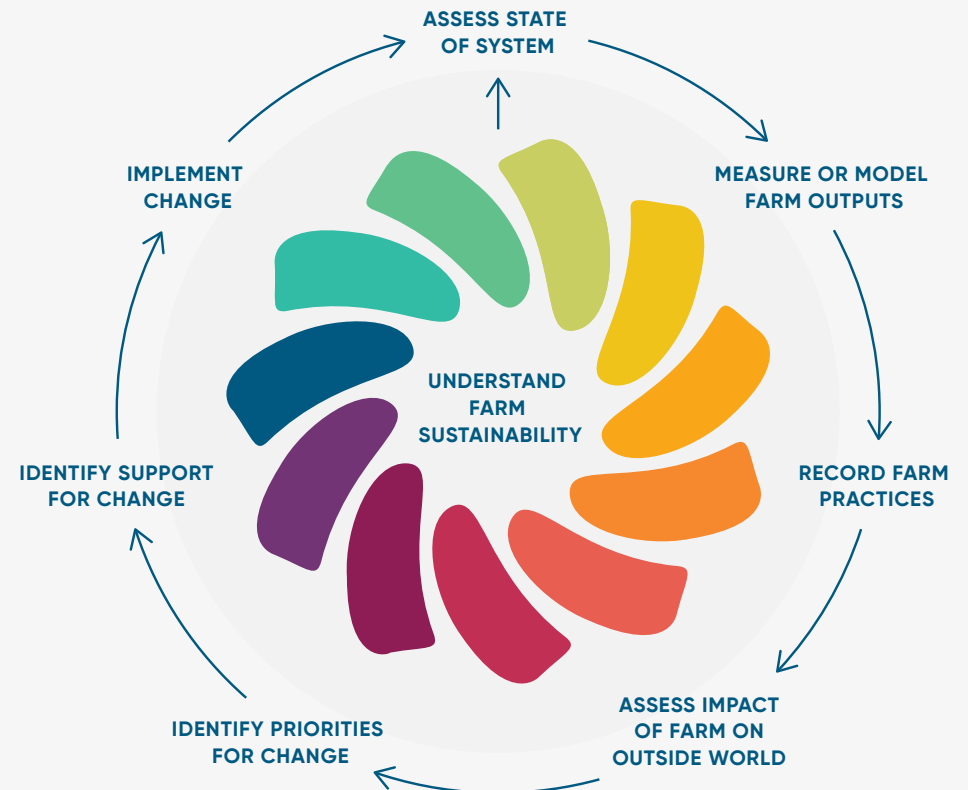
The Global Farm Metric is designed to be embedded into farm assessments, audits, certification schemes and management tools.

As a framework, it can be used by tool developers or assessment providers to ensure they are covering the full scope of holistic sustainability.

It defines a common set of indicators for data collection, establishing a common language and a baseline of data for sustainability.

Alignment of the data collected against the indicators with the requirements of existing tools and applications will reduce duplication and encourage their use by farmers.

Roadmap for a complete farm sustainability assessment



Driving Change

A common framework drives positive action for nature, climate and people. It enables shared understanding, a supporting policy and economic environment and informed consumer choice.

For farmers to drive positive change, they must have a holistic understanding of sustainability.

A common framework enables consistent monitoring of the environmental, social and economic state of the farm. This helps farmers identify and manage risks, improve resilience, increase positive impacts and mitigate the negative impacts of the farm on the wider world.

For farming to be part of the solution to global challenges, governments must create an enabling environment for change and monitor progress at farm level.

The Global Farm Metric provides a baseline of farm-level data which can be aggregated to track change at a local, national and international scale.

For financing the transition towards more sustainable systems, we must have a common baseline of data.

This data can be used as a basis for farm support payments, provide access to new markets and support sustainable investment by the finance and food industries.

For citizens to mobilise consumer power, we need consistent and verifiable information. A common framework enables transparency and accountability across the supply chain. It can inform and align food labelling and raises awareness of whole-farm sustainability.

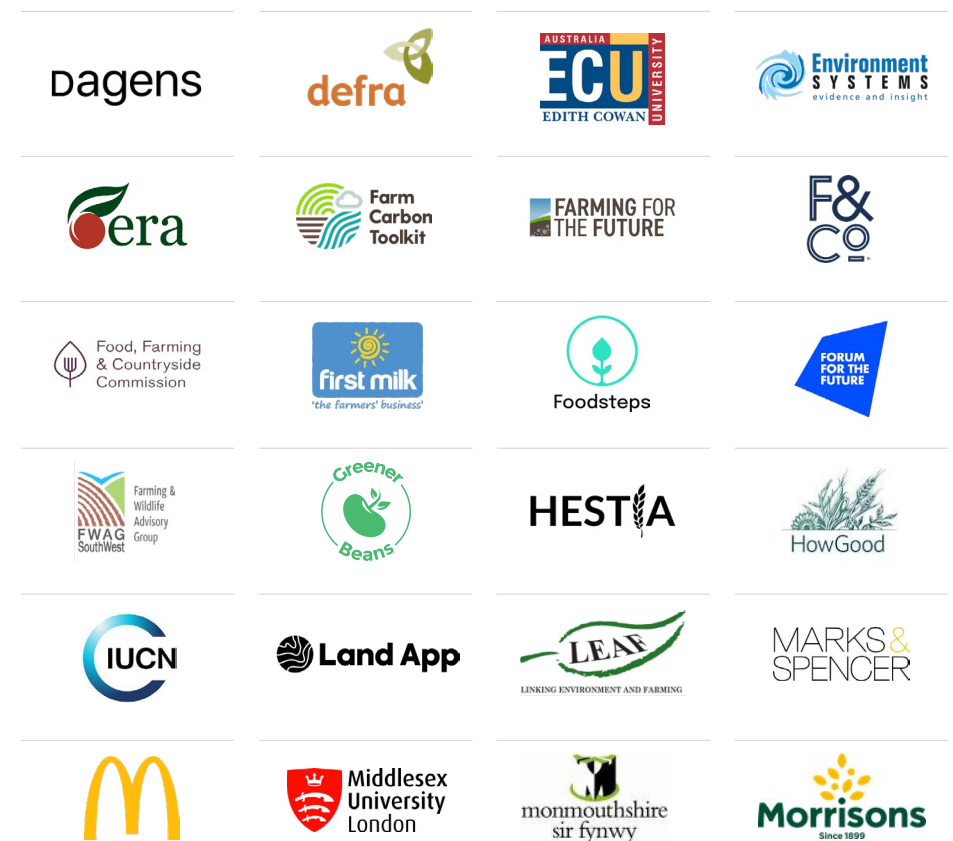
For knowledge exchange that inspires innovation and drives change globally, we need a definition for sustainability at farm-level. Expressed through the Global Farm Metric framework, this will enable dialogue between educators, learners, consultants and farmers.

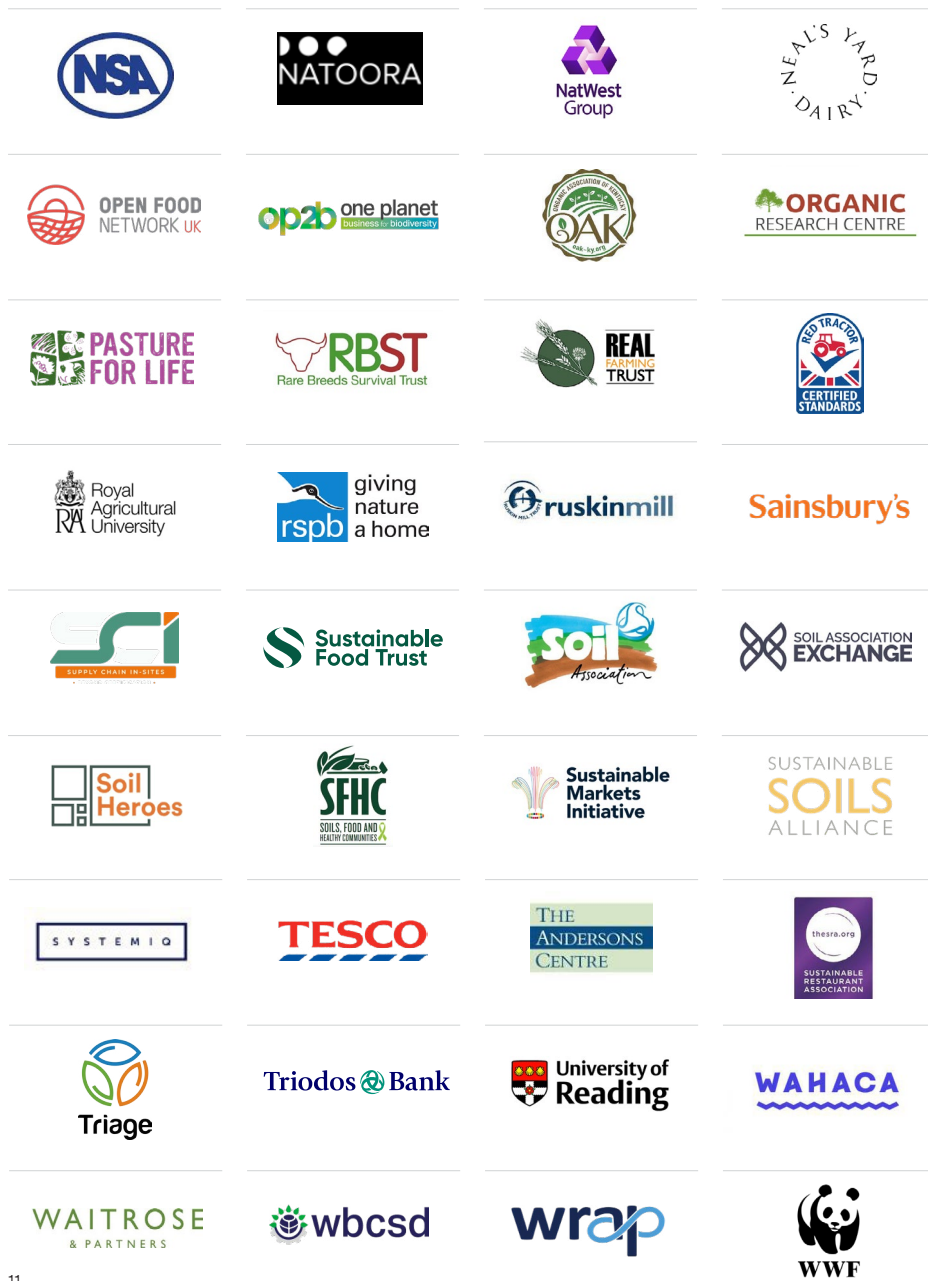


“Achieving our sustainability goals is dependent on everyone being able to do better.”

Coalition

The Global Farm Metric Coalition is supported by over 150 organisations from across the global food and farming sector. We are working together to establish a common framework for farm sustainability. These are some of the organisations that have been driving the mission.





Get Involved

To use the framework, join the coalition, be part of a trial or find out more:

info@globalfarmmetric.org

Visit the website:

www.globalfarmmetric.org

Find us on social media:

[@GFMCoalition](https://twitter.com/GFMCoalition)



**GLOBAL
FARM
METRIC**

www.globalfarmmetric.org
info@globalfarmmetric.org
[@GFMCoalition](https://twitter.com/GFMCoalition)

November 2023
Design by Jory&Co

